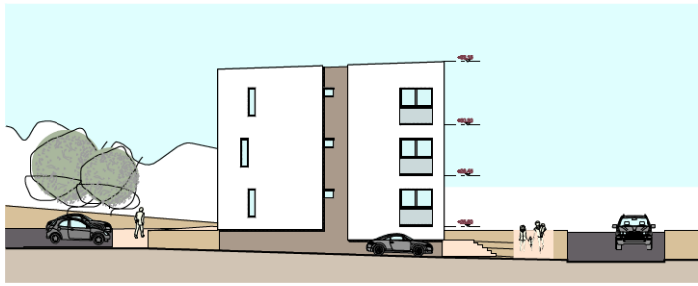
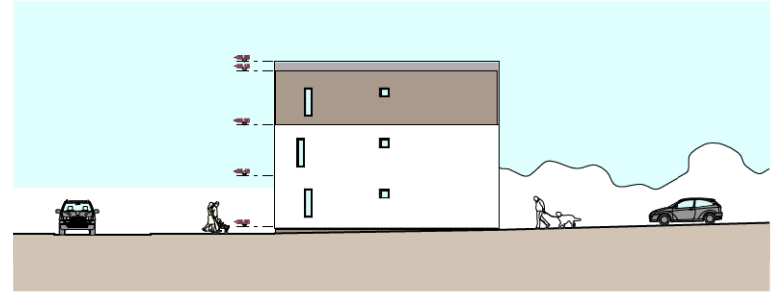




 NORTH ELEVATION



 WEST ELEVATION



 EAST ELEVATION



 SOUTH ELEVATION

■ SUSAN ■ STEPHEN ■ ARCHITECTS ■
 — 4 Melville Crescent, Edinburgh, EH3 7JA — Tel: 0131 220 3003 — Fax: 0131 220 3022 —

| | |
|--|--|
| CLIENT: KILTANE DEVELOPMENTS LTD | JOB: FERRY TOLL ROAD |
| JOB No. 2758 | DRAWING: PROPOSED BLOCK A CONTEXT ELEVATIONS |
| DO NOT SCALE FROM THIS DRAWING. This drawing and its data are the copyright of Susan Stephen Architects and must not be used for any purpose other than that for which it is issued. | DRAWING: PL20/01 REV. . SCALE: 1:200 @ A2 |



WEST ELEVATION



NORTH ELEVATION



SOUTH ELEVATION



EAST ELEVATION

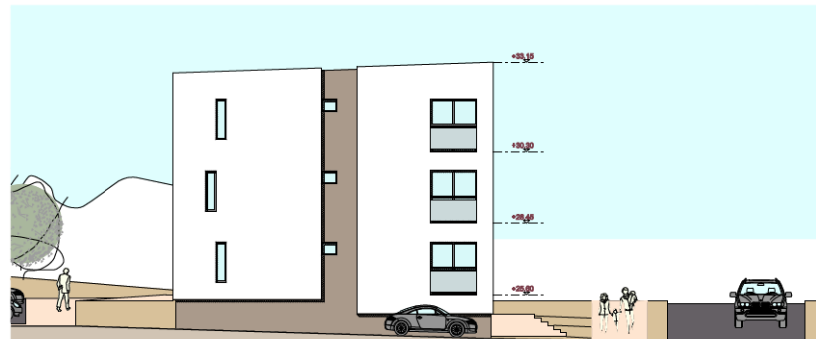


■ SUSAN ■ STEPHEN ■ ARCHITECTS ■
 — 4 Melville Crescent, Edinburgh, EH3 7JA — Tel: 0131 220 3003 — Fax: 0131 220 3022 —

| | |
|--|--|
| CLIENT: KILTANE DEVELOPMENTS LTD | JOB: FERRY TOLL ROAD |
| JOB No. 2758 | DRAWING: PROPOSED BLOCK B CONTEXT ELEVATIONS |
| DO NOT SCALE FROM THIS DRAWING. This drawing and its data are the copyright of Susan Stephen Architects and must not be used for any purpose other than that for which it is intended. | DRAWING: PL20/02 REV. . SCALE: 1:200 @ A2 |



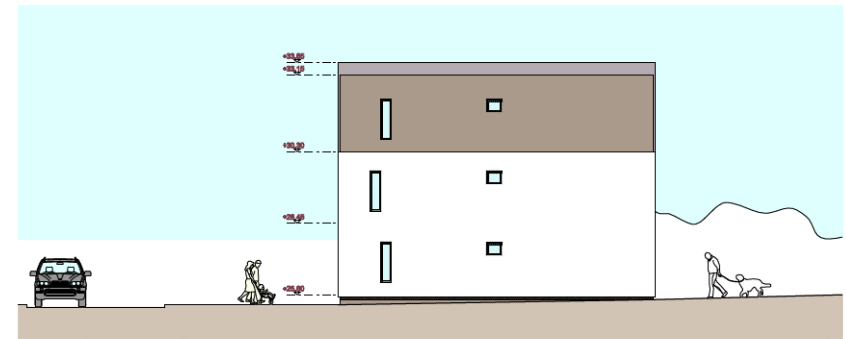
 SOUTH ELEVATION



 WEST ELEVATION

MATERIALS KEY

-  white wet dash render
-  facing brick
-  dark grey window frames
-  dark grey glazed panel
-  glass balustrading



 EAST ELEVATION



 NORTH ELEVATION

■ SUSAN ■ STEPHEN ■ ARCHITECTS ■
 4 Melville Crescent, Edinburgh, EH9 7JA Tel: 0131 220 3003 Fax: 0131 220 3022

| | |
|--|--|
| client: KEANE DEVELOPMENTS | job: FERRY TOLL ROAD |
| job no: 0708 | issues: PROPOSED BLOCK A DETAILED ELEVATIONS |
| 05 MAY 2024 (Issue 1) 10:00 (2024). This drawing and its contents are the property of Susan Stephen Architects and must not be reproduced or used for any other purpose without the written consent of Susan Stephen Architects. | drawing no: PL02003 rev: scale: 1:300 @ A1 |



NORTH ELEVATION



SOUTH ELEVATION



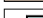
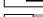



EAST ELEVATION



WEST ELEVATION

MATERIALS KEY

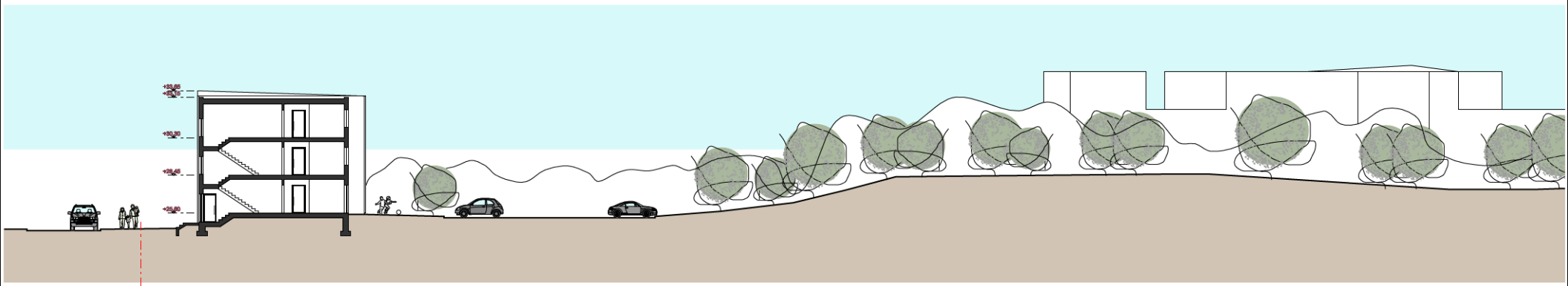
-  white wet dash render
-  facing brick
-  dark gray window frames
-  dark gray glazed panel
-  glass balustrading

SUSAN STEPHEN ARCHITECTS
4 Melville Crescent, Edinburgh, EH9 7JA Tel: 0131 220 3003 Fax: 0131 220 3022

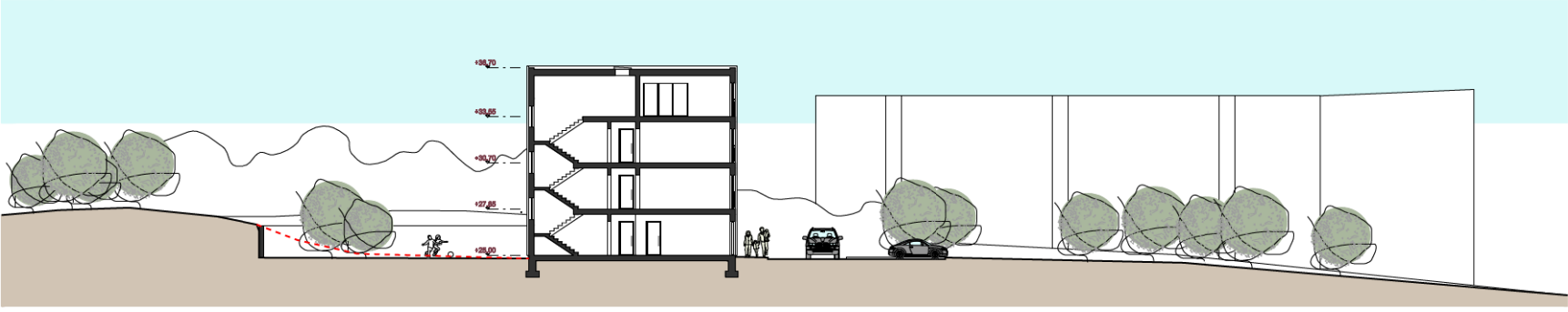
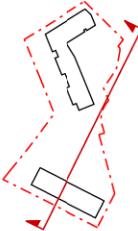
client: KEANE DEVELOPMENTS
job no: 0768
drawn: PL/2004 rev: 001
scale: 1:500 © AS

all PROPOSED BLOCK IS DETAILED ELEVATIONS

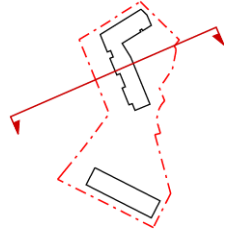
DO NOT SCALE FROM THIS DRAWING. THIS DRAWING AND ALL OTHERS ARE THE PROPERTY OF SUSAN STEPHEN ARCHITECTS AND SHOULD NOT BE REPRODUCED OR TRANSMITTED IN ANY FORM OR BY ANY MEANS, ELECTRONIC OR MECHANICAL, INCLUDING PHOTOCOPYING, RECORDING, OR BY ANY INFORMATION STORAGE AND RETRIEVAL SYSTEM.



SECTION A-A



SECTION B-B



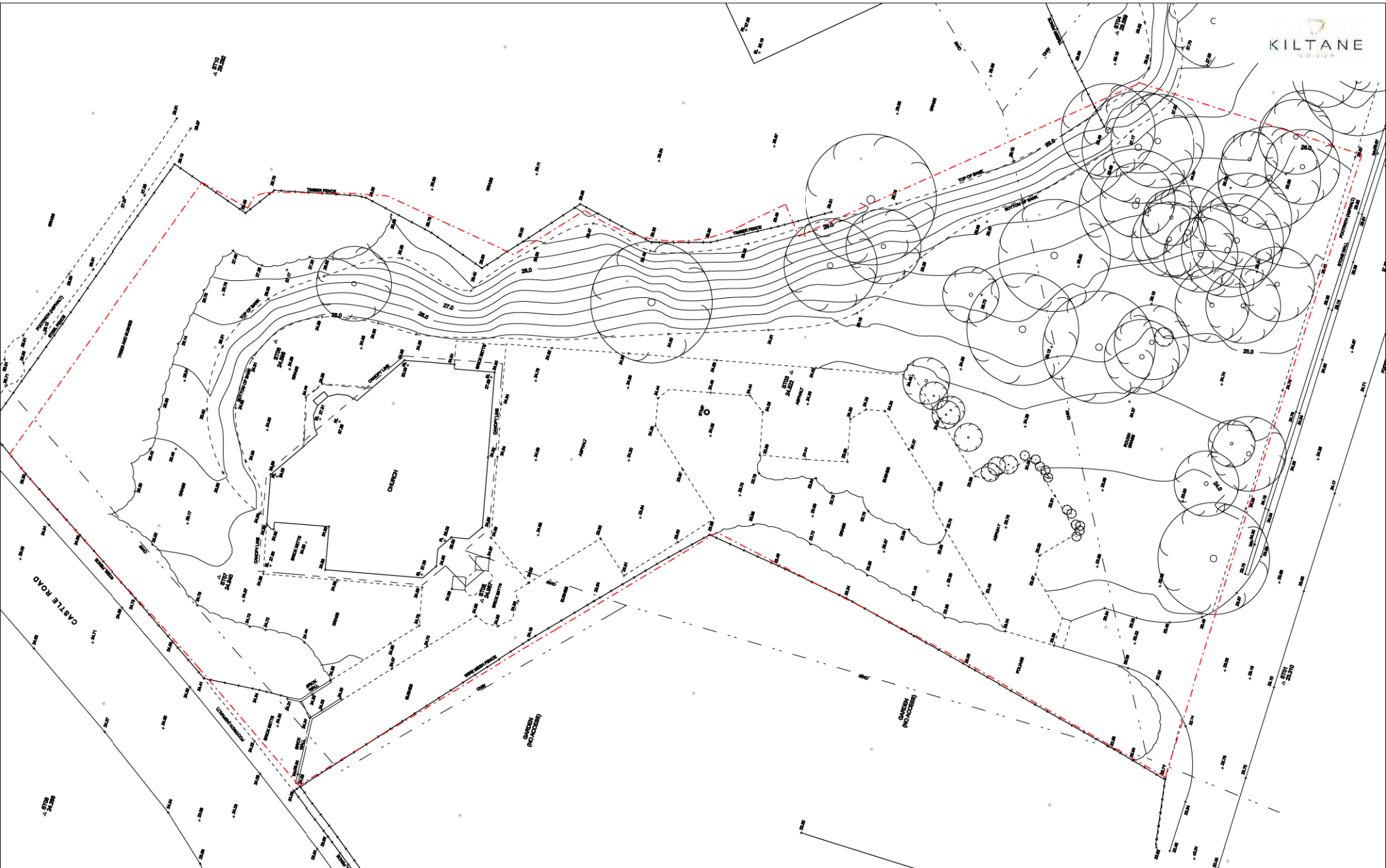
■ SUSAN ■ STEPHEN ■ ARCHITECTS ■
 — 4 Melville Crescent, Edinburgh, EH3 7JA — Tel: 0131 220 3003 — Fax: 0131 220 3022 —

| | |
|--|--|
| CLIENT: KILTANE DEVELOPMENTS LTD | JOB: FERRY TOLL ROAD |
| JOB No. 0758 | DRAWING PROPOSED SECTIONS |
| DO NOT SCALE FROM THIS DRAWING. This drawing and its data are the copyright of Susan Stephen Architects and must not be used for any purpose other than that for which it is issued. | DRAWING: PL21(01) REV. . SCALE: 1:200 @ A2 |



■ S U S A N ■ S T E P H E N ■ A R C H I T E C T S ■
 — 4 Melville Crescent, Edinburgh, EH3 7JA — Tel: 0131 220 3003 — Fax: 0131 220 3022 —

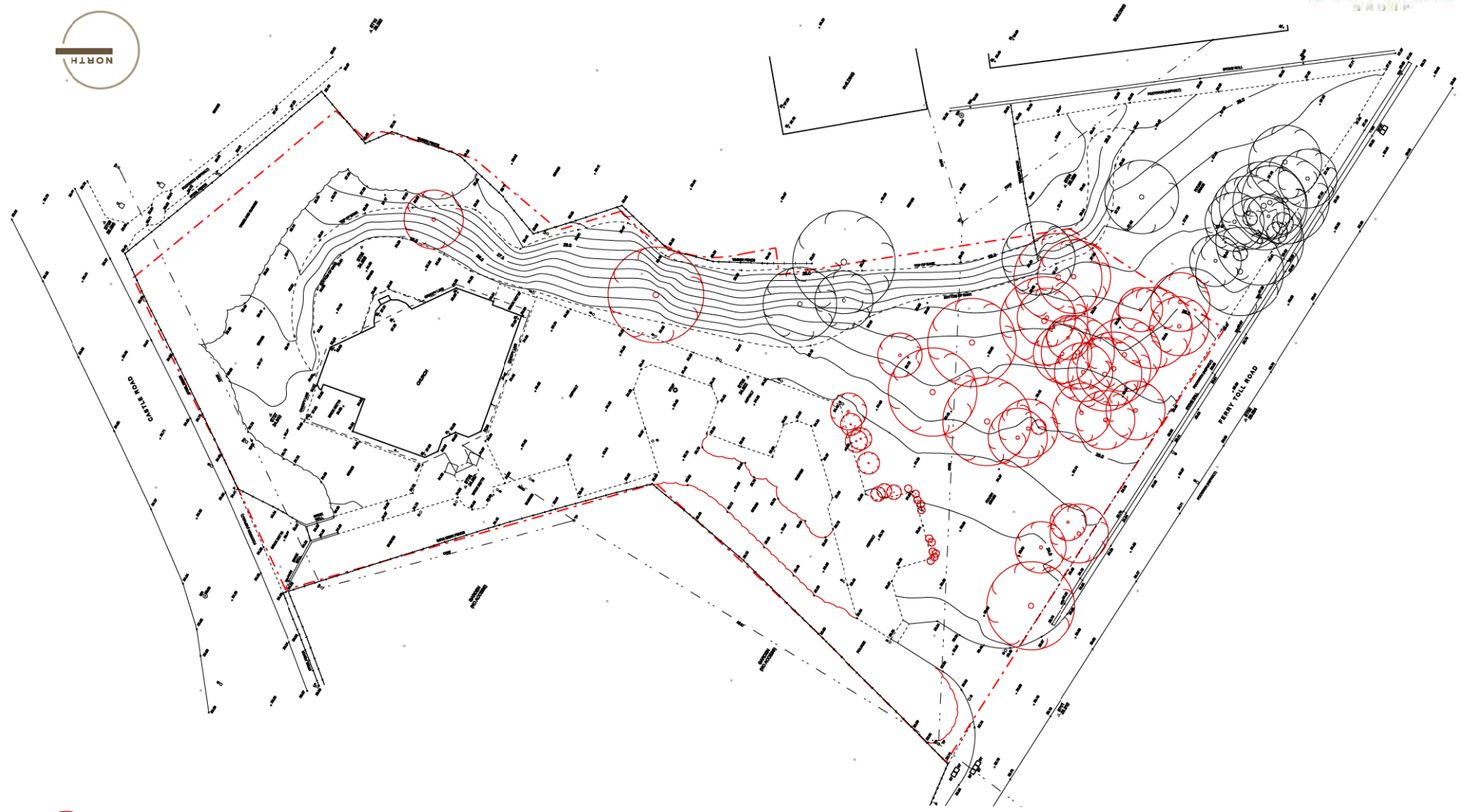
| | | |
|---|--------------------------|--|
| CLIENT | KILTANE DEVELOPMENTS LTD | JOB FERRY TOLL ROAD |
| JOB No. | 0758 | DRAWING EXISTING SITE PLAN /NEIGHBOUR NOTIFICATION |
| DO NOT SCALE FROM THIS DRAWING. This drawing and its data are the copyright of Susan Stephen Architects and must not be used for any purpose other than that for which it is intended | | |
| DRAWING No. | EX(-)01 | REV. . |
| SCALE | 1:1250 @ A4 | |



■ SUSAN ■ STEPHEN ■ ARCHITECTS ■
 — 4 Melville Crescent, Edinburgh, EH3 7JA — Tel: 0131 220 3003 — Fax: 0131 220 3022 —

1:1000

| | |
|--|--|
| CLIENT: KILTANE DEVELOPMENTS LTD | JOB: FERRY TOLL ROAD |
| JOB No. 27758 | DRAWING: EXISTING SITE SURVEY |
| DO NOT SCALE FROM THIS DRAWING. This drawing and its data are the copyright of Susan Stephen Architects and must not be used for any purpose other than that for which it is handed. | DRAWING No. EX(-)02 REV. . SCALE: 1:250 @ A2 |



TREES TO BE REMOVED

■ **S U S A N** ■ **S T E P H E N** ■ **A R C H I T E C T S** ■
 — 4 Melville Crescent, Edinburgh, EH3 7JA — Tel: 0131 220 3003 — Fax: 0131 220 3022 —

| | |
|---|---------------------------|
| CLIENT KILTANE DEVELOPMENTS LTD | JOB FERRY TOLL ROAD |
| JOB No. 0758 | DRAWING TREE REMOVAL PLAN |
| DO NOT SCALE FROM THIS DRAWING. This drawing and its data are the copyright of Susan Stephen Architects and must not be used for any purpose other than that for which it is intended | DRAWING No. EX(—)04 |
| REV. . | SCALE: 1:500 @ A3 |



accommodation schedule
 total site area = 6489m²
 total no. flats = 49no.
 affordable flats = 12no. = 25%
 mainstream flats = 37no.
 mainstream parking = 200%
 affordable parking = 100%

SUSAN STEPHEN ARCHITECTS
 4 Melville Crescent, Edinburgh, EH3 7JA Tel: 0131 220 3003 Fax: 0131 220 3022

client: KEANE DEVELOPMENTS job: FERRY TOLL ROAD
 job no. 0708 scheme: GROUND FLOOR SITE PLAN
 05 MAY 2014 10:58 (REVISED). This drawing and its contents are the property of Susan Stephen Architects and must not be used without their prior written consent. drawing no. PL1-201 rev. scale: 1:200 © AS





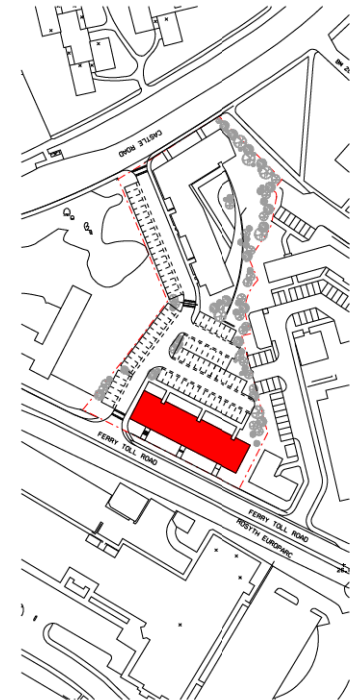
second floor plan



first floor plan

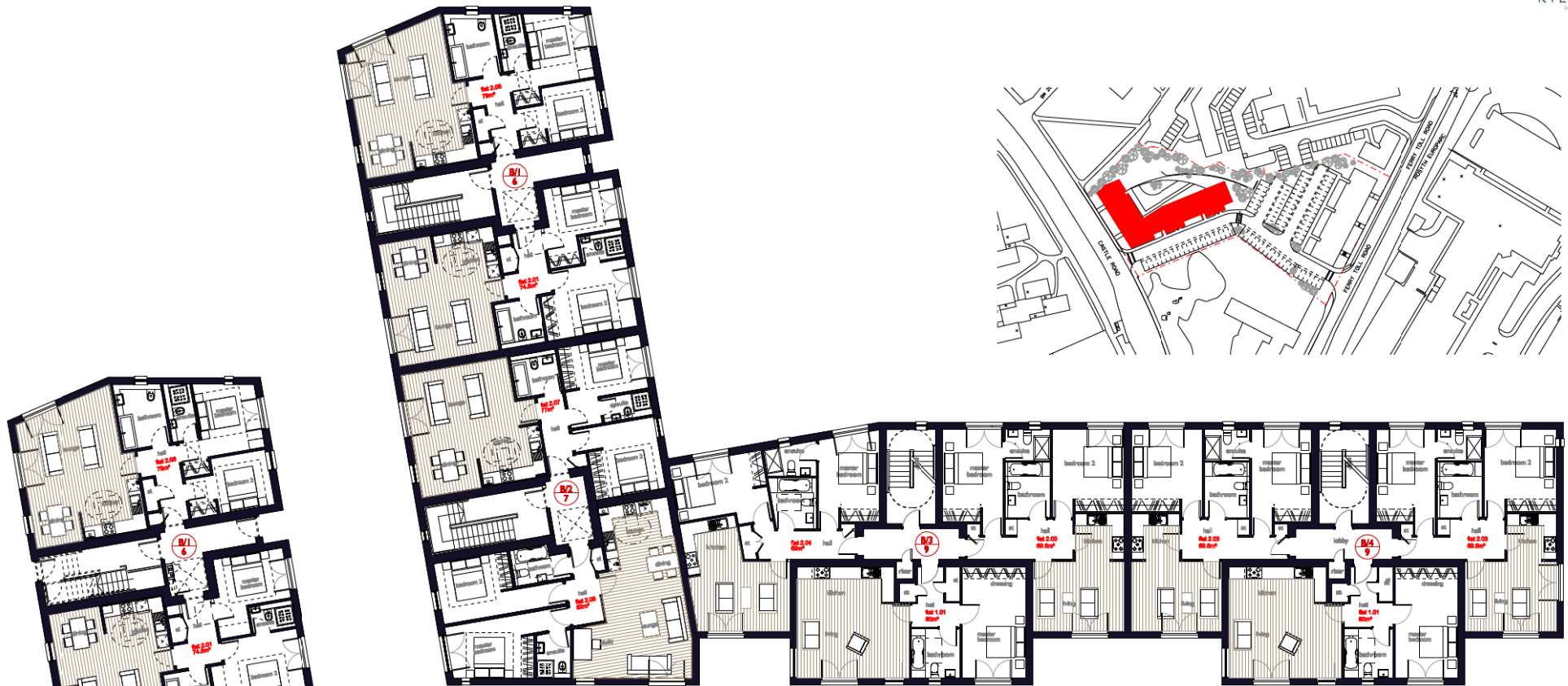
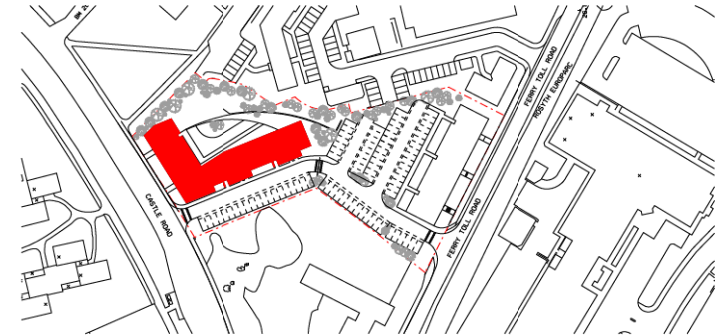


ground floor plan



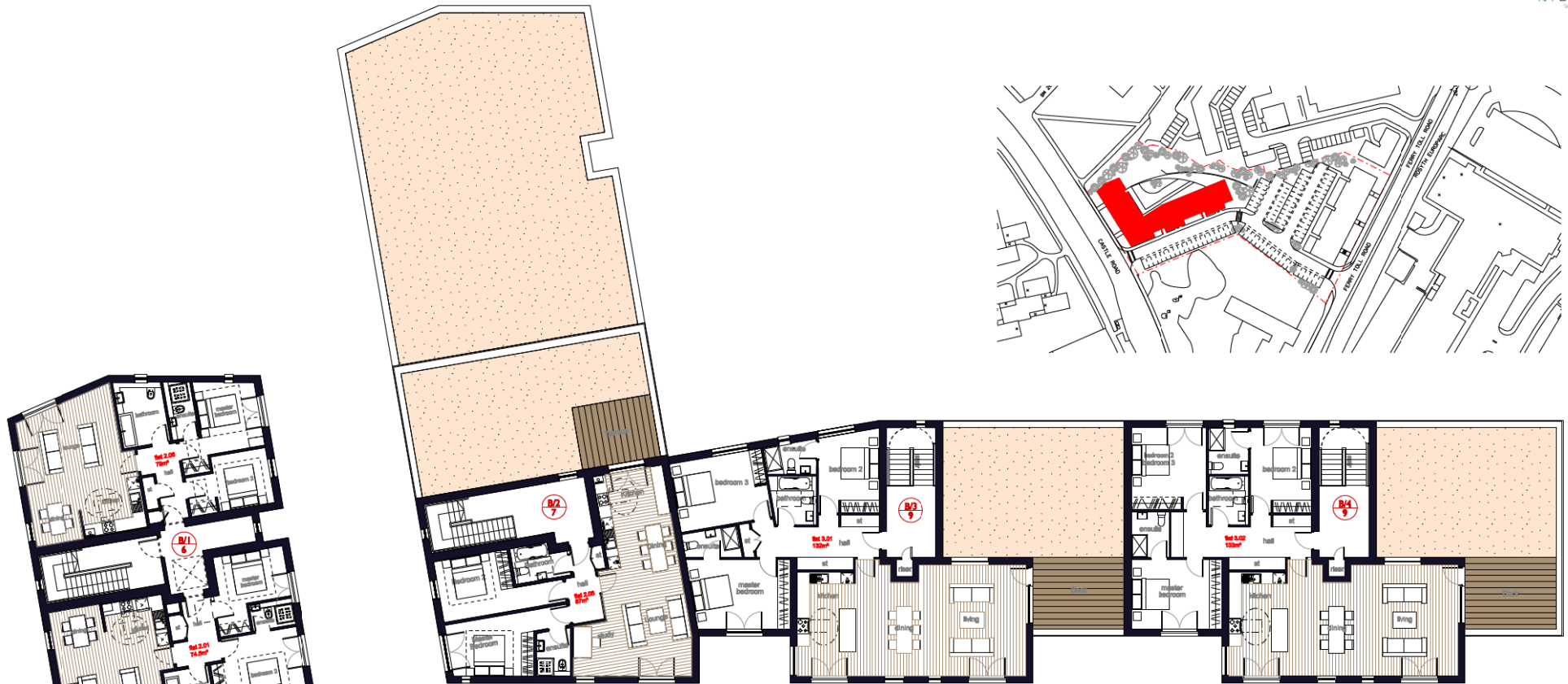
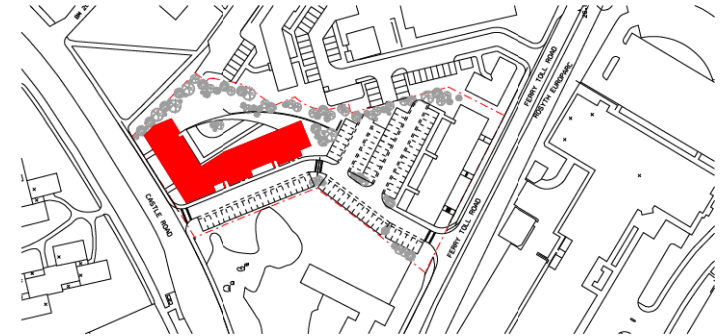
■ SUSAN ■ STEPHEN ■ ARCHITECTS ■
 4 Melville Crescent, Edinburgh, EH3 7JA Tel: 0131 220 3003 Fax: 0131 220 3022

| | |
|--|--|
| client: KEANE DEVELOPMENTS | job: FERRY TOLL ROAD |
| job no: 0708 | scheme: PROPOSED BLOCK A FLOOR PLANS |
| DO NOT SCALE FROM THIS DRAWING. This drawing and its contents are the property of Susan Stephen Architects and must not be reproduced without their written consent. | drawn: m_PJ2801 rev: SCALE: 1/100 © AS |



first floor plan

ground floor plan



third floor plan



second floor plan

■ SUSAN ■ STEPHEN ■ ARCHITECTS ■
 4 Melville Crescent, Edinburgh, EH3 7JA Tel: 0131 220 3003 Fax: 0131 220 3022

client: KEANE DEVELOPMENTS job: FERRY TOLL ROAD
 job no: 0708 scheme: PROPOSED BLOCK B SECOND + THIRD FLOOR PLANS
 05 SEP 2024 10:58 (000000). This drawing and its contents are the property of Susan Stephen Architects and must not be copied or reproduced in any form without the written consent of Susan Stephen Architects. DWG: m_PL23003 rev: SCALE: 1:100 © AS