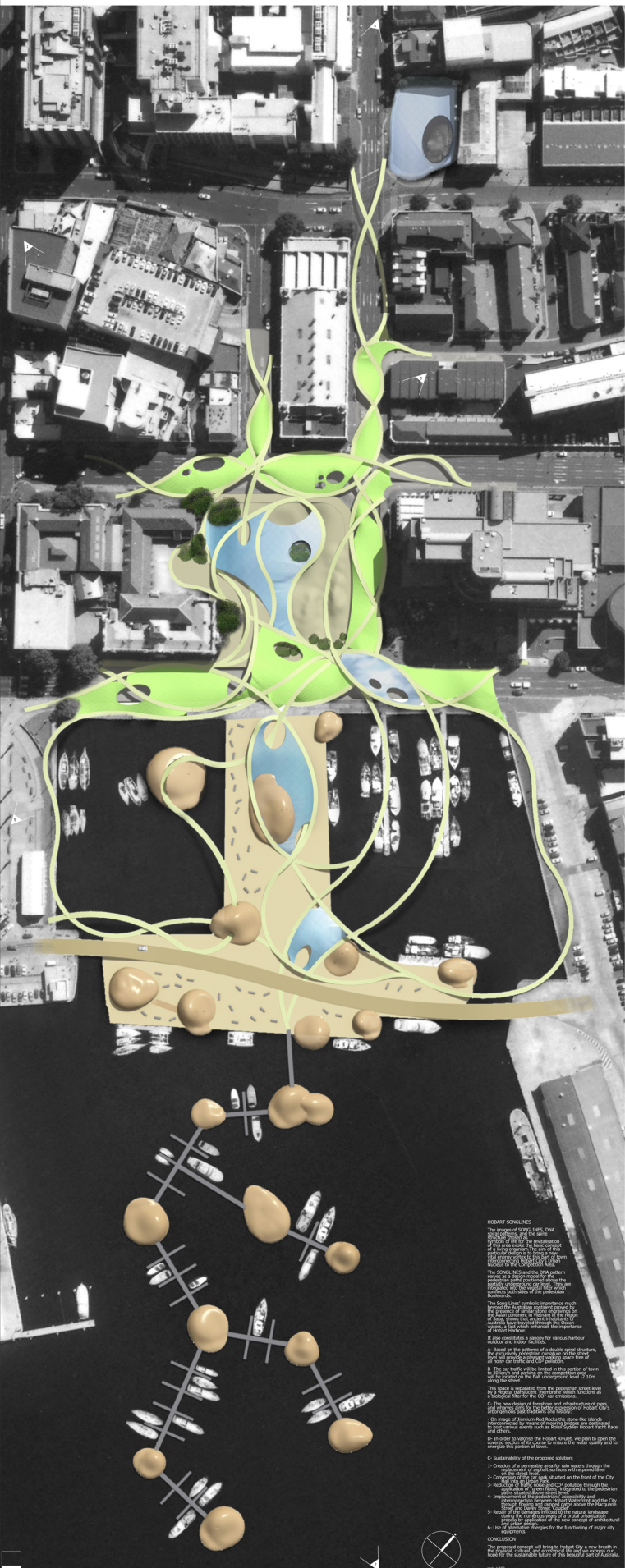


reference pictures

HOBART SONGLINES



HOBART SONGLINES
 The project of SONGLINES, CHA Architects, is a conceptual urban design and landscape architecture project for the Hobart waterfront. The project aims to create a vibrant, pedestrian-friendly waterfront area that connects the city to the water and provides a high-quality public space for the community. The project is based on the concept of 'SONGLINES', which are a series of green and yellow lines that meander through the city, connecting various points of interest and creating a network of green spaces and pedestrian paths. The lines are thicker in some areas and thinner in others, suggesting different levels of intensity or function. The project also includes a series of public art installations and a network of pedestrian paths that connect the city to the water and provide a high-quality public space for the community.

